

# Prescribing Monitoring Document

Practice Prescribing Monthly Statement

Statement No. 5, August 2007

ARTHUR MEDICAL CENTRE (C81017), THE ARTHUR MEDICAL CENTRE, FOUR LANE ENDS, HORSLEY WOODHOUSE, DERBYSHIRE, DE7 6AX

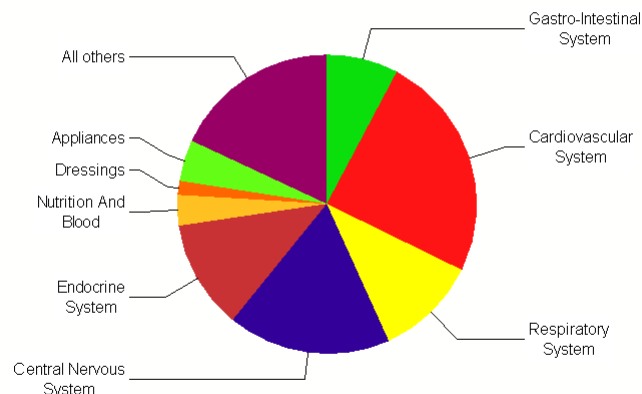
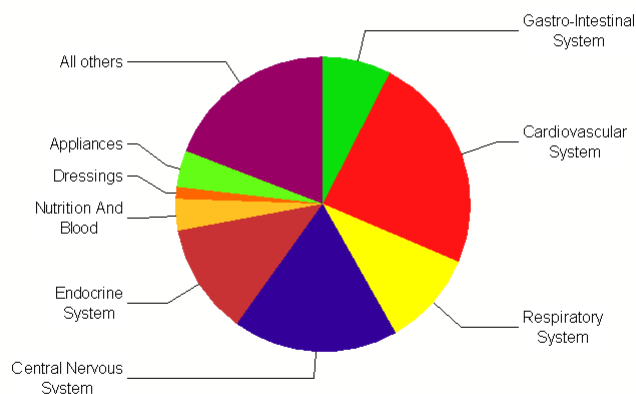
Parent organisation: DERBYSHIRE COUNTY PCT (5N600)

|                                                                  | (£)     |
|------------------------------------------------------------------|---------|
| Target budget April 2007 - March 2008                            | 933,557 |
| Expenditure for August 2007                                      | 80,121  |
| Cumulative expenditure for 2007/2008 YTD                         | 389,737 |
| Forecast out-turn for year based on national expenditure pattern | 930,604 |

| Breakdown of expenditure by major therapeutic group | For August 2007 (£) | % of monthly expenditure | Cumulative (£) | % of annual cumulative expenditure |
|-----------------------------------------------------|---------------------|--------------------------|----------------|------------------------------------|
| Gastro-Intestinal System                            | 6,008               | 7.5                      | 30,005         | 7.7                                |
| Cardiovascular System                               | 19,190              | 24.0                     | 95,658         | 24.5                               |
| Respiratory System                                  | 8,292               | 10.3                     | 43,014         | 11.0                               |
| Central Nervous System                              | 14,521              | 18.1                     | 68,376         | 17.5                               |
| Endocrine System                                    | 9,736               | 12.2                     | 46,240         | 11.9                               |
| Nutrition And Blood                                 | 2,755               | 3.4                      | 12,992         | 3.3                                |
| Dressings                                           | 1,072               | 1.3                      | 5,780          | 1.5                                |
| Appliances                                          | 3,252               | 4.1                      | 17,431         | 4.5                                |
| All others                                          | 15,295              | 19.1                     | 70,241         | 18.0                               |

Expenditure for this month

Expenditure for year



# Prescribing Monitoring Document

## Annual Profile of Cumulative Expenditure

Statement No. 5, August 2007

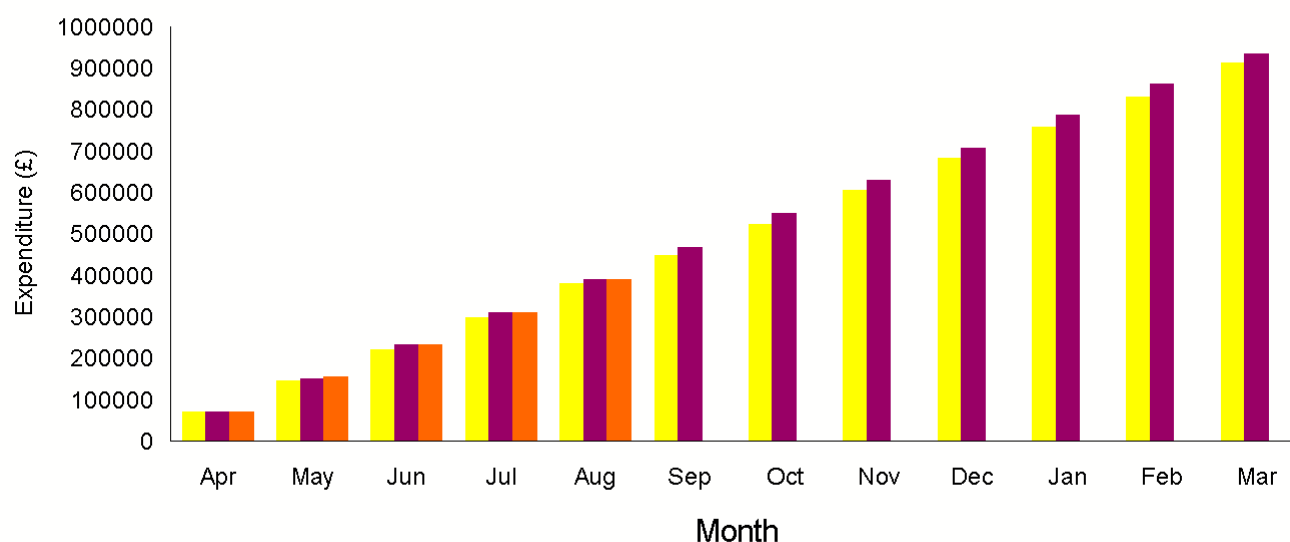
ARTHUR MEDICAL CENTRE (C81017), THE ARTHUR MEDICAL CENTRE, FOUR LANE ENDS, HORSLEY WOODHOUSE, DERBYSHIRE, DE7 6AX

Parent organisation: DERBYSHIRE COUNTY PCT (5N600)

|      | 2006/2007       |                  |                |                 |             | 2007/2008       |                  |                |                 |             |    |
|------|-----------------|------------------|----------------|-----------------|-------------|-----------------|------------------|----------------|-----------------|-------------|----|
|      | Basic Price (£) | Discount (-) (£) | Cont. cost (£) | Actual cost (£) | % of amount | Basic Price (£) | Discount (-) (£) | Cont. cost (£) | Actual cost (£) | % of amount |    |
| Apr  | 77,197          | 7,001            | 24             | 70,220          | 0           | Apr             | 78,395           | 6,864          | 27              | 71,559      | 0  |
| May  | 160,372         | 14,458           | 49             | 145,963         | 0           | May             | 170,810          | 14,930         | 57              | 155,937     | 0  |
| Jun* | 243,134         | 21,929           | 75             | 221,280         | 0           | Jun             | 254,292          | 22,253         | 89              | 232,128     | 19 |
| Jul  | 328,069         | 29,614           | 97             | 298,551         | 34          | Jul             | 339,166          | 29,673         | 123             | 309,616     | 33 |
| Aug  | 416,998         | 37,607           | 121            | 379,512         | 43          | Aug             | 426,800          | 37,212         | 149             | 389,737     | 42 |
| Sep  | 493,247         | 44,495           | 146            | 448,897         | 51          | Sep             |                  |                |                 |             |    |
| Oct  | 575,282         | 51,716           | 172            | 523,738         | 59          | Oct             |                  |                |                 |             |    |
| Nov  | 663,627         | 59,392           | 196            | 604,431         | 68          | Nov             |                  |                |                 |             |    |
| Dec  | 747,821         | 66,742           | 224            | 681,303         | 77          | Dec             |                  |                |                 |             |    |
| Jan  | 830,866         | 73,924           | 259            | 757,201         | 85          | Jan             |                  |                |                 |             |    |
| Feb  | 911,299         | 80,917           | 292            | 830,673         | 94          | Feb             |                  |                |                 |             |    |
| Mar  | 1,000,922       | 88,654           | 322            | 912,589         | 103         | Mar             |                  |                |                 |             |    |

\* Low prescribing indicator

Cumulative Expenditure for this and last financial years shown against this year's target budget



- Cumulative expenditure for previous year (2006/2007)
- Target budget for this financial year
- Cumulative expenditure for current year (2007/2008)